

Baubles, Bubbles & Bags

Style File

Enhance by Natural Compatibles – Easy to apply make-up

November 3rd, 2010

I'm a big fan of mineral make-up. I have tried many different brands and have to say that I absolutely love them. From my experience, the good thing about mineral make up is the fact that they adhere to your skin's natural oils and therefore reduces the likelihood of breakouts and clogged pores. Being a mother of 3 children under the age of 9, I would need make up that is easy to apply, effective and lasts all day. These three qualities are essential to my 5 minute morning make-up routine.

When I was given some make-up to try out, I have to say I was pleased and excited to hear **a) it's Australian owned and made b) made from high quality minerals.** [Enhance by Natural Compatibles](#) has been around for over 18 years and is available mostly in professional salons. Their make-up philosophy is based on the traditional principals of art and colour to create different looks. They use this technique known as [Feature Focussing](#) where they highlight the two main features of the face, the eyes and the lips.

The products I received to try out were their:

[Wet & Dry Foundation](#) in Medium

The [Wet & Dry foundation](#) was pretty easy to apply. If you're after full coverage, then I would recommend to apply it wet, with a damp non-latex wedged sponge. Some people swear by liquid foundation, but I find that it's really hard to control how much to apply and would often leave streaks on my face, but that's just me. I didn't need too much for full coverage and it was easy to control, as in I didn't have blotched spots or streaks on my face. To set it, I used the sponge provided underneath and blotted my whole face. If you're only after sheer coverage then use this foundation dry, with the sponge provided. This foundation also has some natural sun block ingredients – zinc oxide and titanium. Another plus point, it lasted all day, I didn't need to re-apply my make-up at all! The compact is re-usable, you only need to order the inserts once you've used up your foundation. **RRP: \$49.00**



[Applishades](#) in 2 colours – 113 & 101

I LOVE this product! It's easy to use and easy to store too! The [Applishade](#) is a shimmering eye shadow, the eye shadow is stored inside the replaceable cap and how you apply it is to dab the applicator into the cap. There are 10 colours available and the ones I got were 113, which was a whitish colour – great for highlighting the eyes and acts as a fantastic base and 101, which was sort of a mauve, brownish colour. I don't normally wear eye colour in the day, unless I was going out for a meeting or for something special – why? Too much work. Well, this Applishade changed my thoughts on eye shadows. They were so easy to apply and lasted all day too! Even though it had some glimmer, they weren't over the top. This is great for those who work too, especially if you were going out after work and wanted to touch up your eye make-up. You can use it to highlight your cheeks, lips and brows! For cheeks and lips, I would recommend 113, it's quite a neutral colour. **RRP:\$26.00**





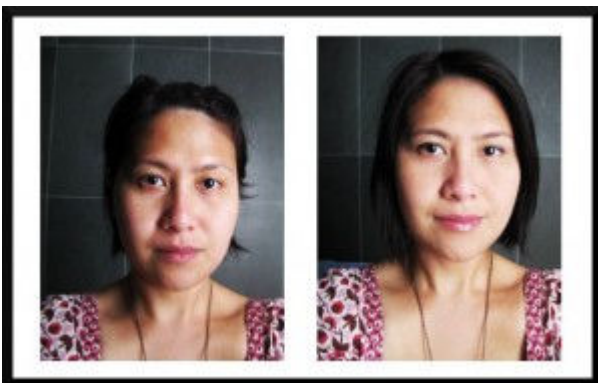
Eye Shadow cap with the little pot of glimmery colour!

[Liquid Eye Liner Pen](#) in Ocean Blue

I don't normally wear eye liner in the day either, but since I had to try this out, I thought, why not. When I do wear eye liner, I often go for liquid eye liners, as I find kohl normally slides off as I go through the day/night but that's just because I've got pretty oily eye lids. I've tried liquid pens before and have to say, am not a big fan of pens – the colour tend to not come on too easily and is usually really light, but I decided to give this a try anyway. The verdict, easy enough to apply as it's felt tipped but, to get the colour out I learned a new trick – press the felt tip onto your hand to let the liner flow. Once that's done, it's easier to apply and the colour is dark enough. It also lasted all day and did not slide off my lids. The eye liner pens also come in Classic Black, Charcoal and Teal Green. **RRP:\$29**



Below is a before and after photo of me wearing the [Enhance by Natural Compatibles](#) make-up. I've also used my own lip gloss, eye brow definer, mascara and bronzer to finish off the look.



Left: Before- eek, look at my dark under eye shadows and the uneven skin tone.

After: Skin tone is more balanced, under eye shadows - gone! Yeay!

For stockists call 03 9764 0966 or visit their site on www.naturalcompatibles.com.au

Also, stay tuned for a video on quick make-up application – yes, full make up in 5 minutes! It CAN be done (provided I don't poke my eye while trying to juggle talking to the video and putting on eye make up)!