

Elizabeth Taylor : A Tribute to a Hollywood Princess

27 MARCH, 2011 BY CANDACE CIOGNA [LEAVE A COMMENT](#)

Elizabeth Taylor : A Tribute to a Hollywood Princess



Last week we lost a true Hollywood Princess, a legend the likes of which we may never see again on the big screen. Elizabeth Taylor captured us early on as a child with her adolescent talent and then later on we watched her grow into an undeniable beauty and an astounding actress.

From films like "Cat on a Hot Tin Roof" to "Taming of the Shrew" her ability to capture her characters essence was uncanny. However for me – when Elizabeth captured me as a child was in her portrayal of Cleopatra. It was in this film that I fell in love. I fell in love with the woman, the character, the costumes – it was a turning point for me. No longer did I want to play kickball with the boys on the street, I wanted to be all that Elizabeth Taylor embodied in Cleopatra. Not just her astounding good looks, but her wit, her sharp tongue and her ability to turn a man with the bat of an eyelash.

As a tribute to the silver screen princess today we bring you Cleopatra's Smokey Eyes – by Natural Compatibles.

The secret to the perfect Smokey Eye is in the blending. Use Natural Compatibles eye shadow, kohl pencil, and mascara and follow this step-by-step guide to create the ultimate sultry look.

1. Start by prepping the entire eyelid with **Perfect Touch Concealer**, which helps to intensify the pigment, stops the eye shadow from smudging and creasing.

1. Using Natural Compatibles **Applishade** range, separate the lid into three sections:

- Using your fingers, create a little tension on the lid. Apply Applishade 113 (Gold Snow) into the inner corner of the lid, blend back towards the center, taking it slightly above the contour line.
- Apply Applishade 104 (Champagne) to the center of the lid, directly above the pupil and blend this into towards outer corner of the lid.
- Apply Applishade 115 (Black) onto the outer third of the lid. Then, using a blending brush, soften the edge of the shadow.

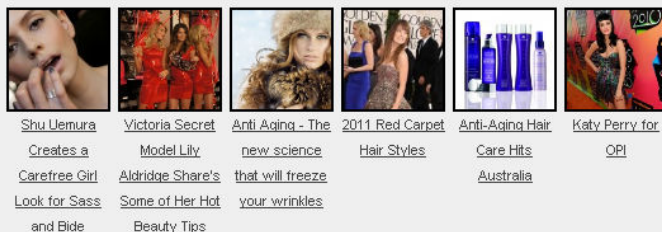


1. Now apply eyeliner using a **Black Eye Pencil**. In true Elizabeth Taylor style, layer the pencil into the upper lash line first, from inner corner to outer edge, until you achieve your desired look. Then move to the lower lash line, and repeat the process. Don't forget to powder over the top of the eye pencil with a corresponding colour to set the colour and to help prevent smudging.

1. Don't forget the most important step using Natural Compatible's **Mascara**, to enhance your Smokey Eye look. Begin by applying a generous coat to the roots of the lashes and follow through to the tip. This creates lengthening and thickness.

Thank you Elizabeth Taylor for your kindness and your grace; you have left a mark on all our hearts and your legacy will live on in all of us.

Related Links:



Win a year's worth of motoring.



Gucci Wearable Catwalk Beauty From: Simply Media



Check out more GlamTV vids and catch the buzz >> MENU