



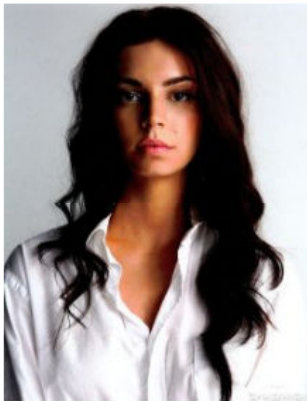
December 1, 2010.

Search:

# RESCU PRODUCT REVIEWS

## The Wet And Dry Foundation Road-Test

Like 16 people like this.



By Melina Byrne

When we saw the Wet and Dry Foundation from Natural Compatibles in the brand's YouTube Make-up Demonstrations, we were intrigued. We had to try it. We also interviewed make-up artist and international model Sarah Patricia (pictured), who appeared in the YouTube tutorials, on how to create the perfect pout and smokey eyes.

### Wet and Dry Foundation

Renowned for its flexible coverage, Natural Compatibles Wet and Dry Foundation combines the best of science and colour for perfect even coverage on any skin. It can be applied wet or dry depending on the coverage required.

It protects the skin against moisture loss and is enriched with minerals and emollients. It contains the most natural sun block ingredients available - titanium and zinc oxide. It's suitable for all skin types, especially oily to normal skins.

**Application tips:** For ample coverage, use a slightly damp wedge latex-free sponge, press onto the skin to those areas requiring coverage, or apply to the entire face, including the upper eyelid area. For a sheer coverage, use a dry sponge, press into the skin. This will set any liquid foundation perfectly.



### RESCU Road-test:

I was using messy mineral make-up until I found this great versatile product. I preferred using it dry, but it worked well as a concealer when wet, which was helpful. I received lots of compliments on how healthy my skin looked, and my bathroom is a lot cleaner without mineral make-up spilt everywhere!

It is available in three shades. (refills are available). For stockist enquiries, visit [www.naturalcompatibles.com.au](http://www.naturalcompatibles.com.au) or call 1800 636 077.

### Interview With Sarah Patricia, Make-Up Artist For Natural Compatibles:

**RESCU:** You starred in Natural Compatibles' YouTube demonstrations on the perfect pout and smokey eyes. Can you give us some tips?

**Sarah Patricia:** The trick to achieving the perfect smokey eyes is all in the blending of eyeshadow. The edge of your eyeshadow should blend into nothing! Take a small soft brush and with no product on the brush, work the line of the shadow with a very light touch until it blends into nothing. Firm strokes won't do the job as you'll just move the skin rather than the eyeshadow.

The perfect pout is about getting the balance of the lip shape right as most people's lips are not perfectly symmetrical. Always line the lips first and correct the shape before applying the lip colour. If you make a mistake, you can always use a flathead brush with a little bit of foundation to clean up the outside line.

To view the videos, visit [www.youtube.com/naturalcompatibles](http://www.youtube.com/naturalcompatibles)

### RESCU NEWSLETTER

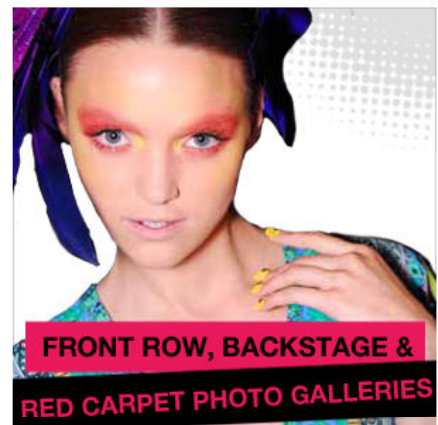
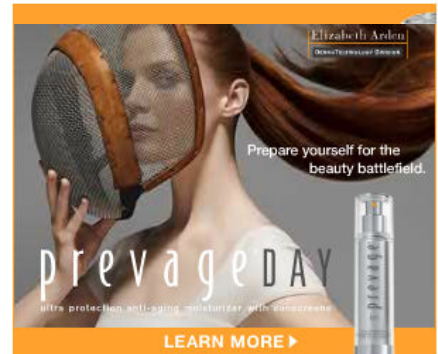
**SIGN UP** TO RESCU AND REFER YOUR FRIENDS FOR YOUR CHANCE TO WIN A DELIGHTFUL PRIZE PACK FROM BIODERM



EMAIL

SIGN UP

FOLLOW RESCU Click here >



### VIDEOSPOTLIGHT

Exclusive: Roja Dove International Fragrance Expert Interview Part 2

