



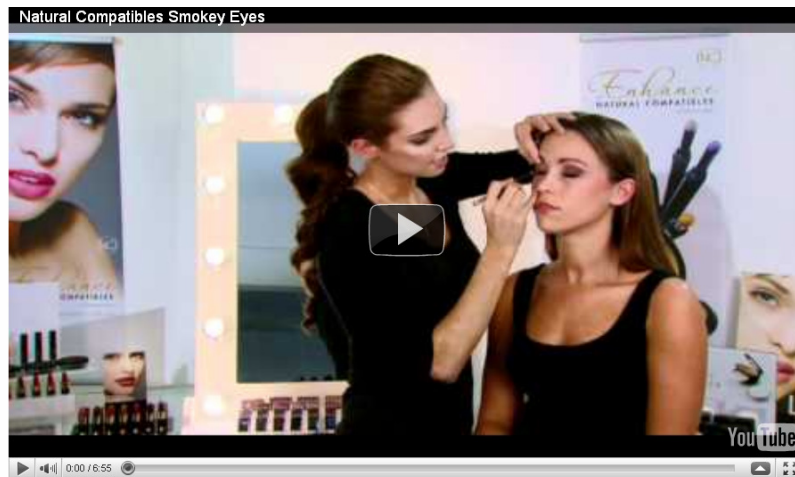


As my inspiration I used an image from Versace 2010

I was sent to try a brand of make up called **Enhance by Natural Compatibles**. Enhance by Natural Compatibles is an **Australian made**, *mineral enriched* make-up brand that has been enhancing the natural beauty of Australian women for over *17 years*.

**Sarah Patricia**, international model and make-up artist is independent of Natural Compatibles and is also the artist in the video below and works with Natural Compatibles for demonstrations and testings. **She has also recently featured in Megan Gales swimwear launch, Peter Morrissey campaign, David Jones Fashion show and more.**

I tried the "**Smokey Eye**" look this morning before heading to work, which you can see a step-by-step in the video below. The products are *fantastic*, and even though I am not a fan of foundation person the "Wet and Dry" foundation I was given is incredibly light and smooth on your skin. I was a bit reluctant to the colour palette for my eyes, as they are mainly pink and purple and I am not used to using these types of shades. This is definately something I will continue to use, perhaps not on a daily basis but more for the special occasion. And the fact that they are all **mineral based** means it gets my vote. The make-up tutorials are great (*and I can spend hours watching people apply make up to others... I find it strangely fascinating...*) - you can find them all on their **YouTube channel**.



*A big thank you to Natural Compatibles for this great little gift pack! xo*